



# RAP

RISK ASSESSMENT PROFILER

**RAP Project**

**Integrated Risk Management**

[www.arete-inc.com](http://www.arete-inc.com)

(888)-99 ARETE (992-7383)

*If you don't invest in risk management, it doesn't matter what business you're in, it's a risky business.*

— Gary Cohen

## It's a Risky Business Building the Infrastructure

Capital infrastructure investments are expected to increase rapidly worldwide. Over the next several years an estimated \$57 trillion in infrastructure investments will be required to keep pace with projected global GDP growth through 2030.

A key goal for management of these projects is to prevent and reduce the threats a project may face throughout the course of its life and to minimize the impact of unpreventable or unforeseen risks.

The Integrated Risk Framework states, “businesses that successfully execute capital projects are supported by an experienced risk-management team that understands the stages of a capital project as well as the significant risks that exist in all phases of project delivery.”

The benefit of understanding project risks is that once identified, management may take mitigative actions to minimize the impact. Therefore, adequate risk identification and mitigation is imperative to reducing schedule and cost overruns and is essential to effective capital project execution.

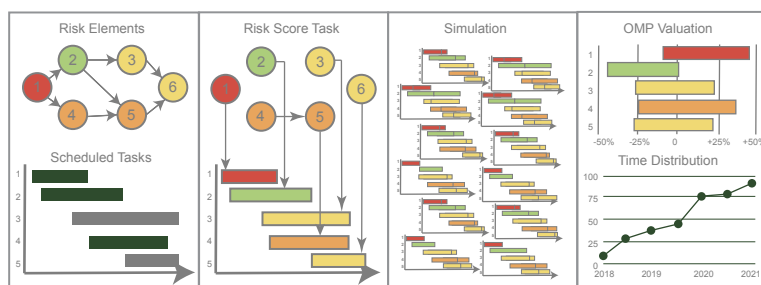
## Adequate Risk Identification and Management is the Foundation for Effective Capital Project Execution

RAP utilizes a unique, simplified approach that leverages industry complex analytic techniques; qualitative, schedule, and quantitative risk analysis.

**QUALITATIVE RISK ANALYSIS** is a technique that identifies the probability or frequency of a risk event occurring and the impact or severity the risk will have if it does occur. Risks have both probability and impact that determine a risk score.

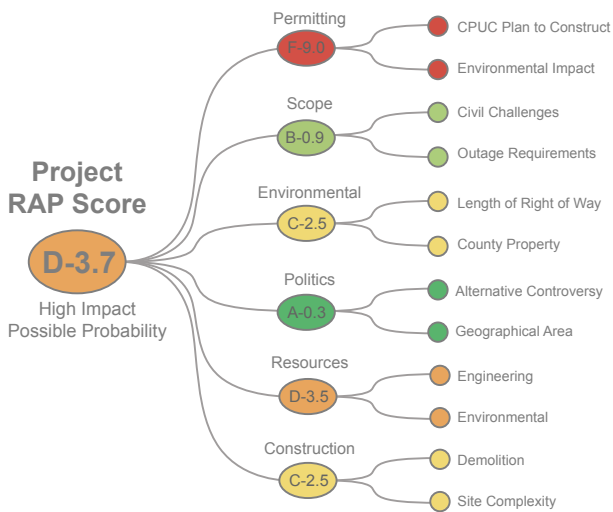
**SCHEDULE RISK ANALYSIS** is a technique that links the risk information of project activities to the baseline schedule, providing sensitivity information of individual at-risk elements to simulate the potential impact of uncertainty on the final project duration and cost. The project baseline schedule tasks are compared to the risk elements, then linked and simulated using Monte Carlo techniques. The results are analyzed to generate optimum, most likely, and pessimistic values.

**QUANTITATIVE RISK ANALYSIS** is a further analysis of the highest priority risks during which a quantitative rating is assigned to develop a risk register with corresponding action plans for mitigation. Inputs are derived from the qualitative and schedule analyses by automating the creation of the risk register and identifying the risk events, risk drivers, and mitigation actions.



# Flexible Solution for your risk management needs

Understanding the challenges and complexities of capital project management inspired ARETE to develop the Risk Assessment Profiler (RAP), a risk management system that helps portfolio project teams identify and manage risks throughout a project's lifespan. RAP is a web-based, multi-user platform that provides thorough project insights and encourages key constituent collaboration. The system uses a checklist methodology that identifies risk categories, elements, and mitigation considerations. It also allows users to perform a schedule risk analysis and administer a risk register. While other tools tend to be complicated and overwhelming, RAP is easy-to-use and efficient. As a result of this innovative technology, comprehensive risk assessments can be completed **WITHIN ONE HOUR**.



## Your Risk System an intuitive tool

**ROBUST** allows management to make smart, informed decisions throughout the project lifespan with comprehensive risk analytics.

**EFFICIENT** supports complete assessments in one hour; conduct multiple assessments throughout the project's life cycle.

**INSIGHTFUL** guides decisions of project managers, team members, and executives through insightful dashboards and visual tools.

**ANALYTICAL** calculates a qualitative risk score for the portfolio and projects, aiding in understanding of risks, leverages a project schedule for simulation.

**ACTIONABLE** mitigates risks by providing pre-defined mitigation considerations and automatically create a project's risk register with events and actions.



## RISK MANAGEMENT FRAMEWORK

### PREPARE the Organization

Essential activities to Prepare the organization to manage security and privacy risks.

### CATEGORIZE Cyber Assets

Categorize the system and information processed, stored, and transmitted based on impact analysis.

### SELECT Controls

Select the set cyber controls to protect the system based on risk assessments.

### IMPLEMENT Controls

Implement the controls and document how controls are deployed.

### ASSESS Risk Elements

Assess to determine if the controls are in place, operating as intended, and producing the desired results.

### AUTHORIZE Actions

Stakeholders make risk-based decision to Authorize the system to operate.

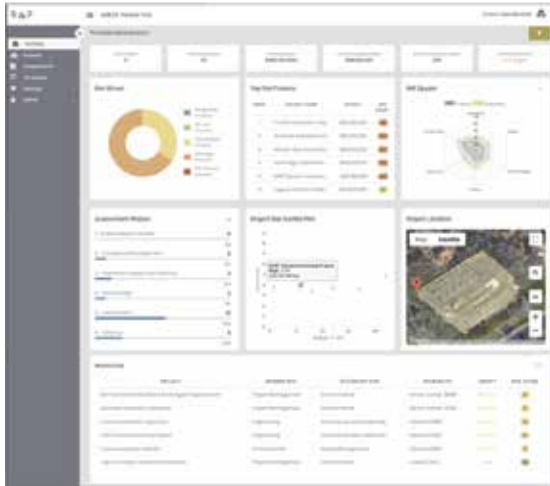
### MONITOR Risks

Continuously Monitor control implementation and risks to the system.

# Rap Features flexible analytical risk platform

## PORTFOLIO DASHBOARDS

- Insightful portfolio and project risk management dashboards.
- Understand your portfolio risks with the Spyder, Wheel, and Scatter Plot.
- Determine and analyze portfolio and project risk exposures.
- View the top risk ranked projects in your portfolio.
- View on a map your portfolio of projects and their location risks with GIS data layers.



## RISK TEMPLATES

- Manage risk templates for each project type.
- Generate quick risk assessments consistently for all projects.
- Risk scores are calculated by pre-determined risk element values.
- Identify standard descriptions and mitigation considerations.
- Configure project phases/stage gates to weigh in on risk scoring.

## PROJECT SCHEDULE

- Load project schedule data (Primavera, Project, etc.) to utilize for simulation analytics.
- View the project schedule Gantt chart and critical paths.
- Generate systematic probabilities and task sensitivities with Monte Carlo simulations.
- View detailed histograms displaying outcome results for the schedule and budget Impacts.



## RISK REGISTER

- Automatically generate a risk register by selecting pre-identified at risk elements.
- Manage risk events with pre-configured impact and mitigation action considerations.
- Update the risk register as your project progresses and mitigation is occurring.



[www.arete-inc.com](http://www.arete-inc.com)  
(888)-99 ARETE (992-7383)

300 Spectrum Center Drive, Ste. 400  
Irvine, CA 92618  
[info@arete-inc.com](mailto:info@arete-inc.com)  
[www.rapyourrisk.com](http://www.rapyourrisk.com)

